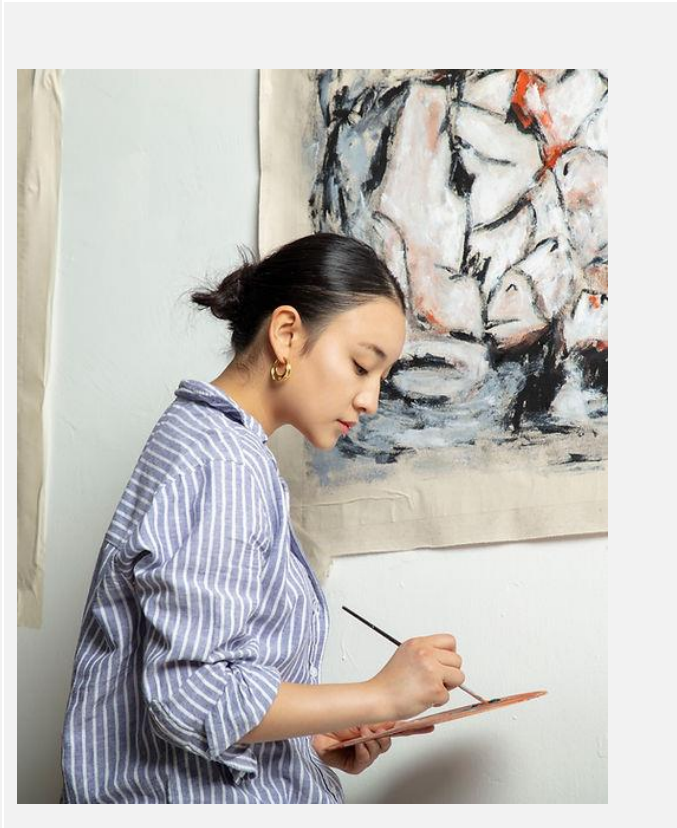


**Mizuki Nishiyama (b.1998)**



**About**

Mizuki Nishiyama is a London-based, mixed-Japanese artist who creates raw and confrontational artworks spanning paintings, sculptures, tapestries, poetry, and performances that explore the fragile human condition.

Nishiyama notably conducts dialogues and critiques the socio-politics of the female experience by incorporating the artist's Japanese paternal soil, which has buried her military ancestors since the 1400s, into her works, where she re-evaluates ancestry, patriarchy, and time.

Exploring ideas of purity, femininity, Shintoism, and trauma; the artist utilises the elements of the world, and responds to what it means to be a woman today. The premise of the work begins with soil that the artist excavated from her paternal land in Japan; which dates back to the 1400s where her military ancestors, including members who committed Seppuku ritual suicides, and members that shaped Shintoism (Yoshida family; constructing the foundation of purification within the religion).

## Solo Exhibitions

- 2022 'The Beautiful and The Grotesque', Seefood Room, Hong Kong  
'Seiza: Transgressing the Seated Body', ArtNext, Hong Kong
- 2021 'Mizuki Nishiyama', Farmani Group, Hong Kong  
'Moroi', Shout Gallery, Hong Kong  
'Ikebana', International Finance Centre, Hong Kong  
'Mizuki Nishiyama', Mr Wolf, Hong Kong
- 2020 'Shunga', Whitestone Gallery, Hong Kong  
'Mizuki Nishiyama', Operation Smile Charity Art Auction, Hong Kong  
'An Exploration of Human Fragility : Love and Lust', Tenri Cultural Institute of New York, New York
- 2019 'Mizuki Nishiyama: 脆い: An Exploration of Human Fragility', The Greenpoint Gallery, New York
- 2018 'Mizuki Nishiyama', Rabbit House, New York

## Group Exhibitions

- 2024 'En Route: UAL HK Alumni Group Exhibition', 3812 Gallery Hong Kong, Hong Kong  
'London Light', M P Birla Millenium Gallery, London  
'Red Performance', Lethaby Gallery, London  
'Remapping Reality', Contemporary by Angela Li, Hong Kong
- 2023 'Quiet Shores, Vibrant Swells: The Young Waves From East Asia', European Cultural Academy, Venice  
'Purity Performance / Ode to Proteus', Gillian Jason Gallery, London  
'Eye of the Collector', London  
'The Earth We Walk Upon, The Ancestry We Bring With Us', Gillian Jason Gallery, London

'All Things Current are Found, Central Saint Martins MA Interim Show', Trinity Buoy Wharf, London

'Dreams of a New Moon', Lethaby Gallery, London

'Hysteria', Gillian Jason Gallery, London

2022 'Digital Art Fair 2022', Hong Kong

'NFTitties', London

'Face to Face', Gillian Jason Gallery, London

'Rise of Venus', Geek Pictures x Perrotin, India

'Fever', Aucart, London

'Beloved Community', Black Wall Street Gallery, New York

'Orizzonti Trasversali', M.A.D.S Gallery, Milan

'JingArt', Beijing

K11 Musea, Hong Kong

'Through the Prism', Gillian Jason Gallery, London

AM Gallery, Hong Kong

BlueArk, Hong Kong

2021 Tower 535, Hong Kong

HerClique, New York

'Affordable Art Fair', Hong Kong

Art She Says, New York

'Superfine! Art Fair', New York

13a New Street, Hong Kong

2019 'RAW Natural Born Artist (Stellar)', New York

'The Landmark', Mandarin Oriental, Hong Kong

Abike Studio: The Phluid Project, New York

2018 12th Street Gallery, New York

**3812** gallery  
Hong Kong | London

Plant House Gallery, New York

The Greenpoint Gallery, New York [First Place People's Choice]

Spectra, New York

2017 Parsons Student Senate Gala, New York

**3812gallery.com**

London | Unit 3, G/F, The Whiteley, 149 Queensway, London W2 4YN, England

E. london@3812cap.com | T. +44 203 982 1863

Hong Kong | 26/F, Wyndham Place, 40- 44 Wyndham Street, Central

E. hongkong@3812cap.com | T. +852 2153 3812